

State-wide Social and Emotional Learning Embedded within Equity-based MTSS: Impact on Student Academic Outcomes

Multi-Tiered System of Support (MTSS) is a framework within which schools provide evidence-based instruction and support to all students aligned with their identified needs (Choi, McCart, & Sailor, 2020; Choi, Meisenheimer, McCart, & Sailor, 2017; McIntosh & Goodman, 2016; Sailor & McCart, 2014). MTSS provides a comprehensive set of academic and behavioral strategies that rely on data to mobilize and coordinate diverse resources for all students. Further, when social and emotional learning (SEL) is embedded within MTSS, it offers a foundation to support learning in ways that address the full array of student need (Lane, 2007).

When MTSS with embedded SEL is applied in concert with an equity orientation (Waitoller & Kozleski, 2013a, 2013b), it functions as a driver for re-organizing schools in a manner that contributes to solving the weighty problems of inclusion of students who need additional or intensive instruction and services (Giangreco & Suter, 2015; McCart, Sailor, Bezdek, & Satter, 2014; Sailor, 2017; Stelitano, Russell, & Bray, 2019). Sink and Ockerman (2016) devoted a special issue of *Professional Counselor* to applications of MTSS that chronicled the importance of utilizing data-based decision making (Vanlommel & Schildkamp, 2018); social and emotional learning (Harrington, Griffith, Gray, & Greenspan, 2016); and utilization of the framework to support students of color experiencing challenging social behavior (Belser, Shillingford, & Joe, 2016); among other ongoing studies.

Meeting the complex needs of students requires more than effective academic and behavioral instruction. Recognizing this, the California Department of Education adopted SEL as a state-wide initiative to meet the needs of the whole child. California's *Social and Emotional Learning Guiding Principles* (2018) offers the following explanation:

A robust body of research tells us that when evidence-based SEL programming is implemented well, academic achievement increases as does student well-being (Durlak, Weissberg, Dymnicki, Taylor, & Schellinger, 2011). Those results not only persist over time and lead to better relationships and life

outcomes for students across all socioeconomic and racial groups, but can also save our schools and society as much as \$11 for every \$1 invested (Belfield, Bowden, Klapp, Levin, Shand, & Zander, 2015; Greenberg, Katz, & Klein, 2015). A recent consensus statement by The Aspen Institute's National Commission on Social, Emotional, and Academic Development's Council of Distinguished Scientists asserted that 'integrating social and emotional development with academic instruction is foundational to the success of our young people, and therefore to the success of our education system and society at large' (Jones & Kahn, 2017, p. 12). (p. 1)

SEL instruction and support offers important strategies for student success during their schooling as well as after. Those skills include self-awareness, self-management, social awareness, relationship skills and responsible decision making (CASEL, 2013; 2015; Norris, 2003). Social-cognitive or cognitive-behavioral theories hold that these skills provide students with crucial relational competencies (Zins, Bloodworth, Weissberg, & Walberg, 2004).

Behavioral and SEL programs both adopt evidence-based core instructional systems and practices with positive proactive teaching and utilize data to prevent academic or social failure (Cook et al., 2015). Recent research provides evidence supporting effective behavior and SEL within MTSS at the universal level or core instructional level (Albrecht & Brunner, 2019; Cook et al., 2015; Cressey, 2019). These studies posit that when SEL instruction and support are well integrated within the components of MTSS (e.g., screening, progress monitoring, fidelity, tiered levels of support, data-informed decisions), the system can effectively build SEL competencies in students.

In 2016, the Orange County Department of Education, the Butte County Office of Education, and SWIFT Education Center with support from the California State Department of Education launched a large scale state-wide effort to implement MTSS with embedded SEL. This effort offered districts and schools across the state the opportunity to build their systems to support the whole child (CA SUMS Annual Report, 2018). In the following section of this brief we present a study of a sample of schools from this state-wide program in relation to student academic outcomes.

Research Method

Participants

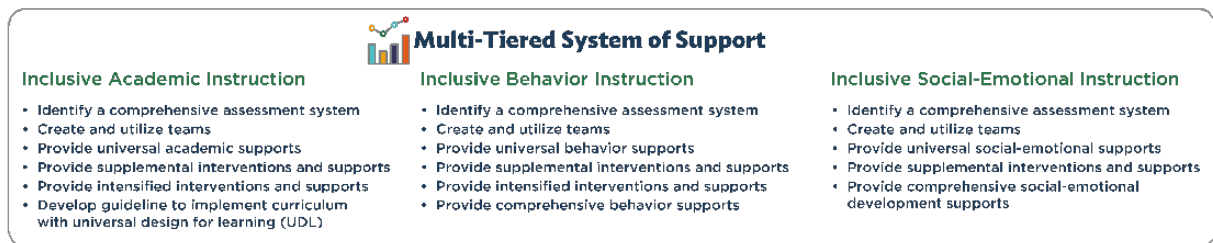
California K-12 schools had the opportunity to participate in the state-wide program. For this study, we selected an implementation group from among the California Scale-up of MTSS Statewide initiative (CAMTSS; www.camtss.org) participants that administered SWIFT-Fidelity Integrity Assessment (SWIFT-FIA) for two consecutive school years. We drew 42 elementary schools from 28 districts from the 79 elementary schools that met these conditions. This implementation group had an average enrollment of 501 students, about 60% of whom were receiving Free and Reduced Meals (FARM). Matched control group schools were selected from 17 school districts. This group's average enrollment was 658 students, about 52% of whom were receiving FARM. Locales of schools in the analyses were varied, with 37% classified as in cities, 24% in suburbs, 12% in towns, and 20% in rural locations.

Procedure

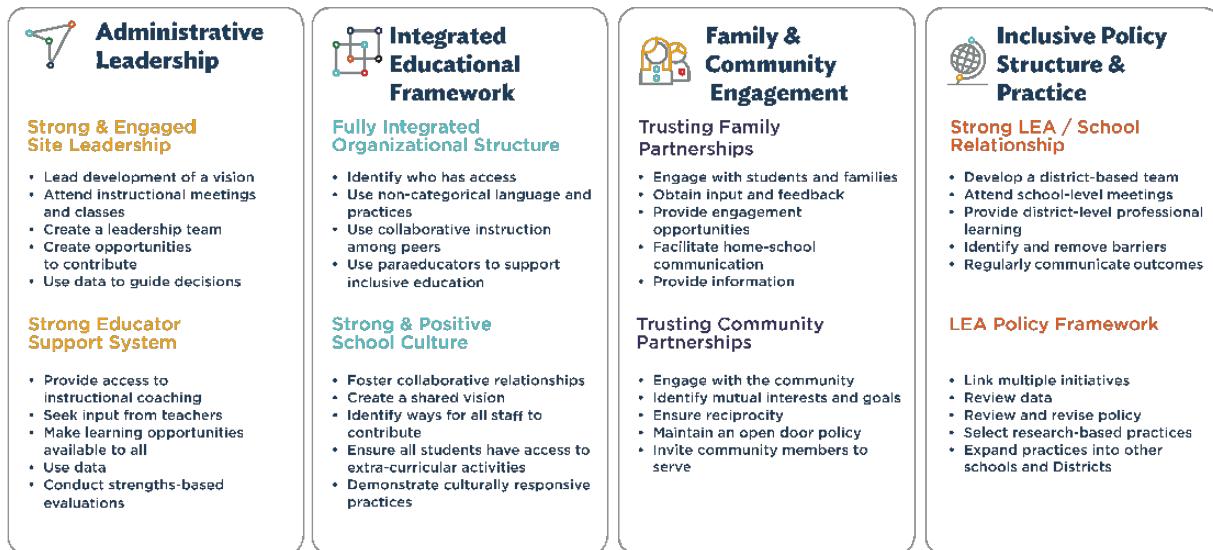
SWIFT Education Center provided the evidence-based framework for this state-wide effort (McCart, Sailor, Bezdek, & Satter, 2014). For this work, they highlighted SEL-specific teams, screening, progress monitoring and effective tiers of support within the MTSS domain (see Figure 1). This emphasis allowed California schools to formalize not only their academic and behavioral but also SEL competencies within their MTSS framework. This effort also focused heavily on the inclusion and involvement of all students, including those who have typically not received adequate support to demonstrate academic and social success.

In addition to the framework, and an “all means all” philosophy, SWIFT Education Center provided a cadre of highly skilled technical assistance providers to support the development and alignment of SEL within MTSS. These facilitators offered professional learning to all 11 regions of the state as well as the State Leadership Team and Regional Transformation Teams. This professional learning series was constructed around the SWIFT framework with delineation of SEL-MTSS components as well as four evidence-based “scaffolding” domains, shown from previous research to enhance the initial installation and early implementation of MTSS (Algozzine et al., 2016; McCart et al., 2014; Sailor et al., 2018). The scaffolding domains of evidence-based

practices are: (a) administrative leadership (Choi, McCart, Hicks, & Sailor, 2019); (b) integrated educational framework; (c) family and community engagement; and (d) inclusive policy and practice (Gross, Choi, & Francis, 2018; Kozleski & Choi, 2018; Kurth, Morningstar, Hicks, & Templin, 2018; Schuh et al., 2018) (Figure 2).



All Means All



Adapted with permission from: SWIFT Education Center. (2016). *Domains and Features Placemat*. Lawrence, KS. swiftschools.org

Figure 1. SWIFT Framework with SEL embedded in MTSS

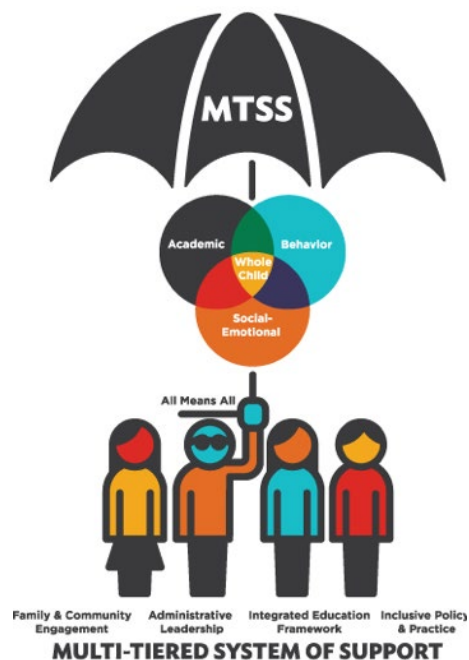


Figure 2. California MTSS with scaffolding domains.

SWiFT provide training in the use of two assessment tools: SWiFT Fidelity Integrity Assessment (SWiFT-FIA), which is a school-based fidelity self-assessment and MTSS installation priority-setting tool (SWiFT Education Center, 2013); and SWiFT Fidelity Implementation Tool (SWiFT-FIT), which is an evidence-based research tool administered by trained external assessors to estimate fidelity of implementation progress on repeated assessments (Pollitt et al., 2018).

Measures

For this study, SWiFT-FIA scores were used to represent fidelity of implementation at the school level. This self assessment is highly correlated with SWiFT-FIT, which has established technical adequacy (i.e., reliability and validity) (Algozzine et al., 2017).

California used Smarter Balanced Assessment Consortium (SBAC) for its statewide annual summative assessment. SBAC is aligned to Common Core State Standards, an acceptable measure for federal accountability purposes that reports psychometric properties that demonstrate technical adequacy (SBAC, 2018). This study relies on this secondary data source for English Language Arts (ELA) and Math student proficiency scores, which were considered key outcome indicators of effective implementation of the state-wide initiative.

Analysis

To understand whether significant relationships existed between SWIFT-FIA and SBAC scores for each year, we used Pearson correlation analysis. Average SBAC scores for 3rd grade ELA and Math were the dependent variables, and total mean score of SWIFT-FIA served as a predictor. Further, descriptive statistics, paired-sample t-tests, and effect size analyses were conducted to examine whether implementation and matched control group made statistically significant improvements on average 3rd grade SBAC ELA and Math scores over the two school years.

Results

The results of the present study demonstrated that student academic achievement increased when SEL-MTSS was implemented with adequate fidelity. The average SWIFT-FIA total mean score was 33.87% in the school year (SY) 2017-18 and increased to 50.83% in the SY 2018-19 (see Figure 3). The Integrated Educational Framework domain showed the largest increase over the two years of implementation, with a 0.66 average score improvement from 0.87 to 1.53 (out of the maximum 3 points on the 0-3 scale).

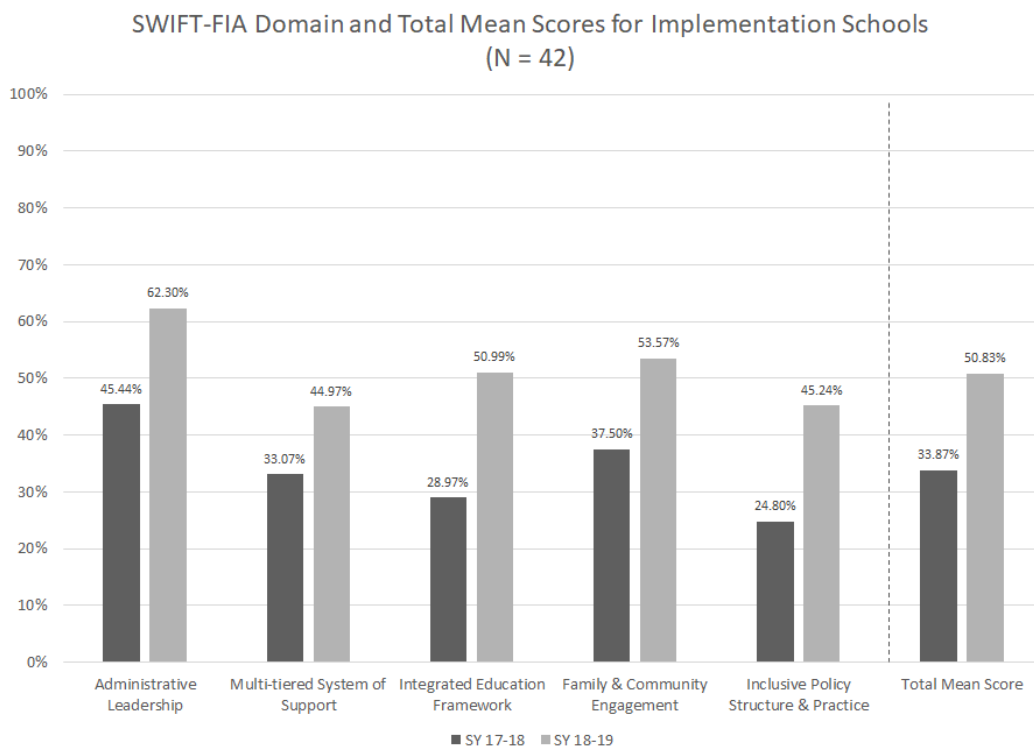
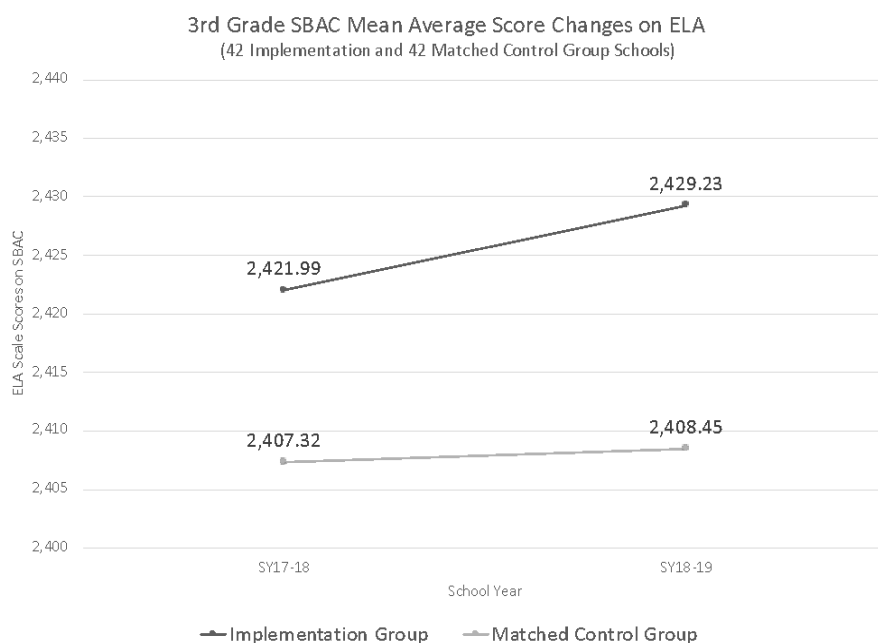


Figure 3. SWIFT-FIA Domain and Total Mean Scores for Implementation Schools

Correlation analysis revealed that SEL-MTSS implementation status was positively and significantly associated with implementation group students' academic achievement. In SY 2017-18, the total mean score of SWIFT-FIA was statistically and significantly correlated with ELA, $r(40) = .44, p < .01$, and Math, $r(40) = .45, p < .01$. The correlation coefficient slightly reduced for ELA in SY 2018-19; however, the coefficient was maintained the medium level correlation, $r(40) = .36, p < .05$. With Math, the correlation coefficient improved in SY 2018-19 to $r(40) = .45, p < .01$.

When implementation and matched control group outcomes were compared, students in the implementation group achieved higher SBAC scores than those in the matched control group in ELA and Math (see Figure 4).



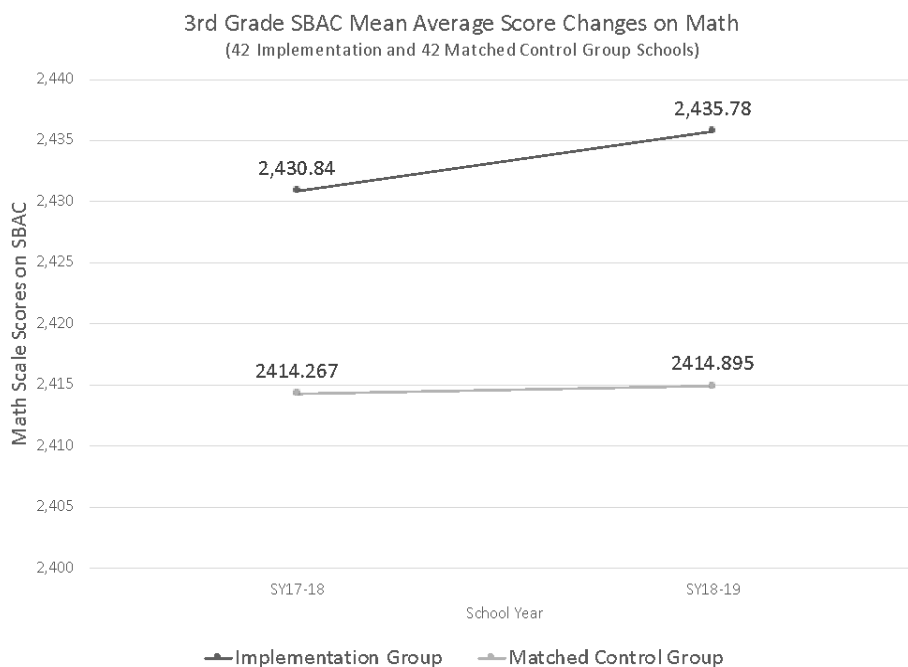


Figure 4. Third grade ELA and Math SBAC score changes for implementation and matched control groups

The paired-sample t-tests revealed that the implementation group ELA score increase was statistically significant, $t(41) = -2.42, p < .05$, with no significance noted in the matched control group, $t(41) = -0.27, p = .79$. The effect size increase was small to medium for the implementation group, $ES = 0.37$, and negligible for the matched control group, $ES = 0.04$ (Table 1.)

A similar pattern was observed for Math. The implementation group mean average score increased 4.94 from 2430.84 ($SD = 39.53$) to 2435.78 ($SD = 36.27$) compared to a matched control group increase of 0.63 from 2414.27 ($SD = 49.64$) to 2414.90 ($SD = 49.28$). The Math score increase was not statistically significant for either the implementation group, $t(41) = -1.62, p = .11$, or the matched control group, $t(41) = -0.14, p = .87$. The effect size was small for the implementation group, $ES = 0.25$, which indicates that about 60% of the scores of the SY 2017-18 are below the mean of SY 2018-19; however, the effect size was trivial for the matched control group, $ES = 0.02$ (Table 1.)

Table 1

Results of Paired-Sample t-test and Effect Size

		Paired Differences								
		<i>M</i>	<i>SD</i>	<i>SEM</i>	95% Confidence Interval of the Difference		<i>t</i>	<i>df</i>	<i>p</i>	<i>ES</i>
						Lower	Upper			
Implementation	ELA	-7.24	19.39	2.99	-13.28	-1.20	-2.42	41	.02*	0.37*
	Math	-4.94	19.75	3.05	-11.09	1.22	-1.62	41	.11	0.25
Matched Control	ELA	-1.13	27.58	4.26	-9.73	7.46	-0.27	41	.79	0.04
	Math	-0.63	28.30	4.37	-9.45	8.19	-0.14	41	.89	0.02

* $p < .05$

Conclusion

In summary, when SEL-MTSS is implemented with fidelity as measured by validated measurement tool, student academic achievement is improved. The correlational analysis shows positive and significant association between SEL-MTSS and academic achievement. The *t*-tests further support significance in ELA score improvement, which was not observed in matched control group schools. Even with the lack of statistically significant Math score growth in the implementation group, which might be caused by a short period of implementation, the effect size of growth was much higher in the implementation group compared to the matched control group. This preliminary analysis indicates the potential of higher level evidences regarding academic improvement in ELA and Math through implementation of SEL-MTSS.

This study offers important information for the field related to educational innovation. Specifically, this systematic study demonstrated positive outcomes for students in ELA and Math when compared with matched controls, thus offering promising evidence of efficacy for implementation of SEL-MTSS. Students benefit when school leaders have (a) a strong philosophical foundation on which to build, (b) access to high-quality professional learning and technical assistance, (c) an evidence-based

framework, and (d) a clear focus on the mechanics of how to implement SEL-MTSS.

Suggested Citation

McCart, A. B. & Choi, J. H. (2020). *State-wide Social and Emotional Learning Embedded within Equity-based MTSS: Impact on Student Academic Outcomes Research Brief*. SWIFT Education Center.

(Note: Look for the full length article to be published in Fall, 2020.)

References

- Albrecht, N. M. R., & Brunner, M. (2019). How positive behavioral supports and social-emotional curriculum impact student learning. *The European Journal of Social & Behavioural Sciences*, 24(1), 2789–2804. <https://doi.org/doi:10.15405/ejsbs.245>
- Algozzine, B., Sweeney, H. M., Choi, J. H., Horner, R., Sailor, W., McCart, A. B., ... Lane, K. L. (2016). Development and preliminary technical adequacy of the schoolwide integrated framework for transformation fidelity of implementation tool. *Journal of Psychoeducational Assessment*, 35(3), 302–322. <https://doi.org/10.1177/0734282915626303>
- Belfield, C., Bowden, A. B., Klapp, A., Levin, H., Shand, R., & Zander, S. (2015). The economic value of social and emotional learning. *Journal of Benefit-Cost Analysis*, 6(3), 508–544.
- Belser, C. T., Shillingford, M. A., & Joe, J. R. (2016). The ASCA model and a multi-tiered system of supports: A framework to support students of color with problem behavior. *The Professional Counselor*, 6(3), 251–262. <https://doi.org/10.15241/cb.6.3.251>
- California Department of Education. (2018). *California's Social and Emotional Learning Guiding Principles*. <https://www.cde.ca.gov/eo/in/socialemotionallearning.asp>
- CASEL. (2013). *Effective social and emotional learning programs*. Chicago, IL: Author. Retrieved from <https://casel.org/wp-content/uploads/2016/01/2013-casel-guide.pdf>
- Choi, J. H., McCart, A. B., & Sailor, W. (2020). Achievement of students with IEPs and associated relationships with an inclusive MTSS framework. *The Journal of Special Education* /textupAdvanced online publication. <https://doi.org/10.1177/0022466919897408>
- Choi, J. H., McCart, A. B., Hicks, T. A., & Sailor, W. (2019). An analysis of mediating effects of school leadership on MTSS implementation. *The Journal of Special Education*, 53(1), 15–27. <https://doi.org/10.1177/0022466918804815>
- Choi, J. H., Meisenheimer, J. M., McCart, A. B., & Sailor, W. (2017). Improving learning for all students through equity-based inclusive reform practices. *Remedial and Special Education*, 38(1), 28–41. <https://doi.org/10.1177/0741932516644054>
- Collaborative for Academic, Social, and Emotional Learning. (2015). *2015 CASEL guide: Effective social and emotional learning programs—*

- Middle and high school edition.* <http://secondaryguide.casel.org/casel-secondary-guide.pdf>
- Cook, C. R., Frye, M., Slemrod, T., Lyon, A. R., Renshaw, T. L., & Zhang, Y. (2015). An integrated approach to universal prevention: Independent and combined effects of PBIS and SEL on youths' mental health. *School Psychology Quarterly, 30*(2), 166–183. <https://doi.org/10.1037/spq0000102>
- Cressey, J. (2019). Developing culturally responsive social, emotional, and behavioral supports. *Journal of Research in Innovative Teaching & Learning, 12*(1), 53–67. <https://doi.org/10.1108/jrit-01-2019-0015>
- Durlak, J. A., Weissberg, R. P., Dymnicki, A.B., Taylor, R.D., & Schellinger, K.B. (2011). The impact of enhancing students' social and emotional learning: A meta-analysis of school-based universal interventions, *Child Development, 82*(1), 405-432. <https://doi.org/10.1111/j.1467-8624.2010.01564.x>.
- Giangreco, M. F., & Suter, J. C. (2015). Precarious or purposeful? proactively building inclusive special education service delivery on solid ground. *Inclusion, 3*(3), 112–131. <https://doi.org/10.1352/2326-6988-3.3.112>
- Greenberg, M.T., Katz, D.A. & Klein L.C. (2015). The potential effects of SEL on biomarkers and health outcomes: A promissory note. In Durlak, J. A., Domitrovich, C. E., & Weissberg, R. P. (Eds.), *Handbook of social and emotional learning : Research and practice* (pp. 81-96). New York: Guilford Press.
- Gross, J. M. S., Choi, J. H., & Francis, G. L. (2018). Perceptions of family engagement and support in SWIFT schools. *Inclusion, 6*(1), 60–74. <https://doi.org/10.1352/2326-6988-6.1.60>
- Harrington, K., Griffith, C., Gray, K., & Greenspan, S. (2016). A grant project to initiate school counselors' development of a multi-tiered system of supports based on social-emotional data. *The Professional Counselor, 6*(3), 278–294. <https://doi.org/10.15241/kh.6.3.278>
- Jones, S. M. & Kahn, J., *The Evidence Base for How We Learn: Supporting Students' Social, Emotional, and Academic Development*, The Aspen Institute, https://assets.aspeninstitute.org/content/uploads/2017/09/SEAD-Research-Brief-9.12_updated-web.pdf.
- Kozleski, E. B., & Choi, J. H. (2018). Leadership for equity and inclusivity in schools: The cultural work of inclusive schools. *Inclusion, 6*, 33-44.
- Kremer, K. P., Flower, A., Huang, J., & Vaughn, M. G. (2016). Behavior problems and children's academic achievement: A test of growth-curve models

- with gender and racial differences. *Children and Youth Services Review*, 67, 95–104. <https://doi.org/10.1016/j.childyouth.2016.06.003>
- Kurth, J. A., Morningstar, M. E., Hicks, T. A., & Templin, J. (2018). Exploring the relationship between school transformation and inclusion: A Bayesian multilevel longitudinal analysis. *Inclusion*, 6(1), 19-32. <https://doi.org/10.1352/2326-6988-6.1.19>
- Lane, K. L. (2007). Identifying and supporting students at risk for emotional and behavioral disorders within multi-level models: Data driven approaches to conducting secondary interventions with an academic emphasis. *Education and Treatment of Children*, 30(4), 135–164. <https://doi.org/10.1353/etc.2007.0026>
- McCart, A. B., Sailor, W. S., Bezdek, J. M., & Satter, A. L. (2014). A framework for inclusive educational delivery systems. *Inclusion*, 2(4), 252–264. <https://doi.org/10.1352/2326-6988-2.4.252>
- McCart, A., Sailor, W., Bezdek, J., & Satter, A. (2014). A framework for inclusive educational delivery systems. *Inclusion*, 2(4), 252-264. <https://doi.org/10.1352/2326-6988-2.4.252>
- McIntosh, K., Ty, S. V., & Miller, L. D. (2014). Effects of school-wide positive behavioral interventions and supports on internalizing problems. *Journal of Positive Behavior Interventions*, 16(4), 209–218. <https://doi.org/10.1177/1098300713491980>
- Norris, J. A. (2003). Looking at classroom management through a social and emotional learning lens. *Theory Into Practice*, 42(4), 313–318.
- Pollitt, D. T., McCart, A., Satter, A., Meisenheimer, J., Morsbach Sweeney, H., Horner, R., Algozzine, B., Lane, K., Roger, B., Choi, J. H., & Sailor, W. (2018). *Schoolwide Integrated Framework for Transformation Fidelity of Implementation Tool, Version 2.0*. Lawrence, KS: SWIFT Education Center.
- Sailor, W. (2017). Equity as a basis for inclusive educational systems change. *Australasian Journal of Special Education*, 41(1), 1–17. <https://doi.org/10.1017/jse.2016.12>
- Sailor, W., & McCart, A. B. (2014). Stars in alignment. *Research and Practice for Persons with Severe Disabilities*, 39(1), 55–64. <https://doi.org/10.1177/1540796914534622>
- Sailor, W., McCart, A. B., & Choi, J. H. (2018). Reconceptualizing inclusive education through multi-tiered system of support. *Inclusion*, 6(1), 3–18. <https://doi.org/10.1352/2326-6988-6.1.3>
- Schuh, M. C., Knackstedt, K. M., Cornett, J., Choi, J. H., Pollitt, D. T., & Satter, A. L.

- (2018). All means all: Connecting federal education policy and local implementation practice through evidence and equity. *Inclusion*, 6(1), 45–59. <https://doi.org/10.1352/2326-6988-6.1.45>
- Sink, C. A., & Ockerman, M. S. (2016). Introduction to the special issue - School counselors and a multi-tiered system of supports: Cultivating systemic change and equitable outcomes. *The Professional Counselor*, 6(3), v–ix. <https://doi.org/10.15241/csmo.6.3.v>
- Smarter Balanced Assessment Consortium (SBAC). (2018). *Smarter balanced assessment consortium: Usability, accessibility, and accommodations guidelines*. Los Angeles: Author. <https://portal.smarterbalanced.org/library/en/usability-accessibility-andaccommodations-guidelines.pdf>
- Stelitano, L., Russell, J. L., & Bray, L. E. (2019). Organizing for meaningful inclusion: Exploring the routines that shape student supports in secondary schools. *American Educational Research Journal* /textupAdvanced online publication. <https://doi.org/10.3102/0002831219859307>
- Sugai, G., & Horner, R. H. (2009). Responsiveness-to-intervention and school-wide positive behavior supports: Integration of multi-tiered system approaches. *Exceptionality*, 17(4), 223–237. <https://doi.org/10.1080/09362830903235375>
- SWIFT Education Center. (2013). *SWIFT Fidelity Integrity Assessment*. Lawrence, KS: Author.
- Vanlommel, K., & Schildkamp, K. (2018). How do teachers make sense of data in the context of high-stakes decision making? *American Educational Research Journal*, 56(3), 792–821. <https://doi.org/10.3102/0002831218803891>
- Waitoller, F., & Kozleski, E. B. (2013a). Understanding and dismantling barriers for partnerships for inclusive education: A cultural historical activity theory perspective. *International Journal of Whole Schooling*, 9, 23–42.
- Waitoller, F., & Kozleski, E. B. (2013b). Working in boundary practices: Identity development and learning in partnerships for inclusive education. *Teaching and Teacher Education*, 31, 35–45. <https://doi.org/10.1016/j.tate.2012.11.006>
- Zins, J. E., Bloodworth, M. R., Weissberg, R. P., & Walberg, H. (2004). The scientific base linking social and emotional learning to school success. In J. E. Zins, R. P. Weissberg, M. C. Wang, & H. J. Walberg (Eds.), *Building academic success on social and emotional learning: What does the*

research say? New York: Teachers College Press.

Copyright SWIFT Education Center, 2020. All rights reserved.